

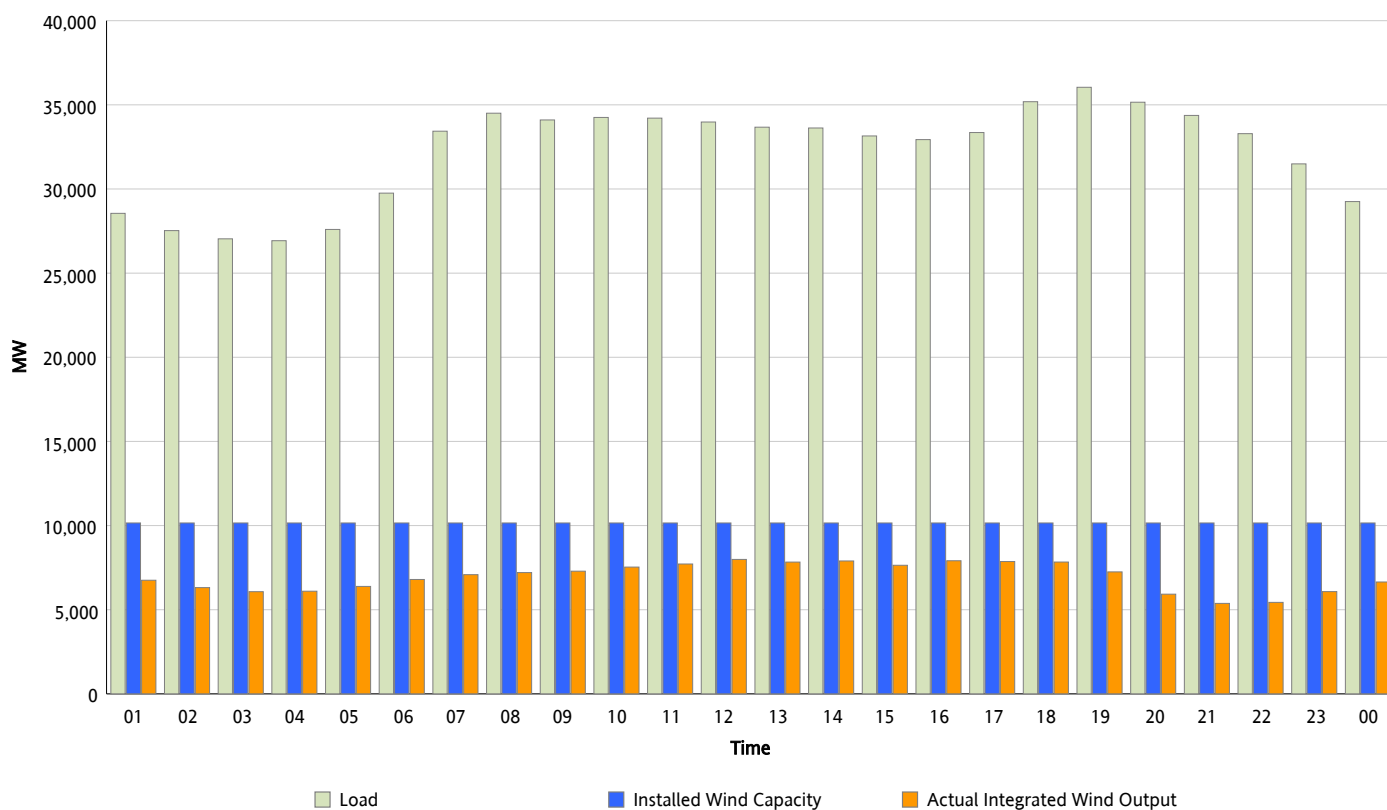


ERCOT Grid Operations

Wind Integration Report : 12/14/2012

Peak Load	36,041 MW
Load Peak Hour (HE)	19
Wind Over Peak	7,249 MW
Wind Record 11/10/12	8,521 MW
Max Wind Value*	8,169 MW
Wind Peak Time	11:43
Wind Integration %	24.08 %

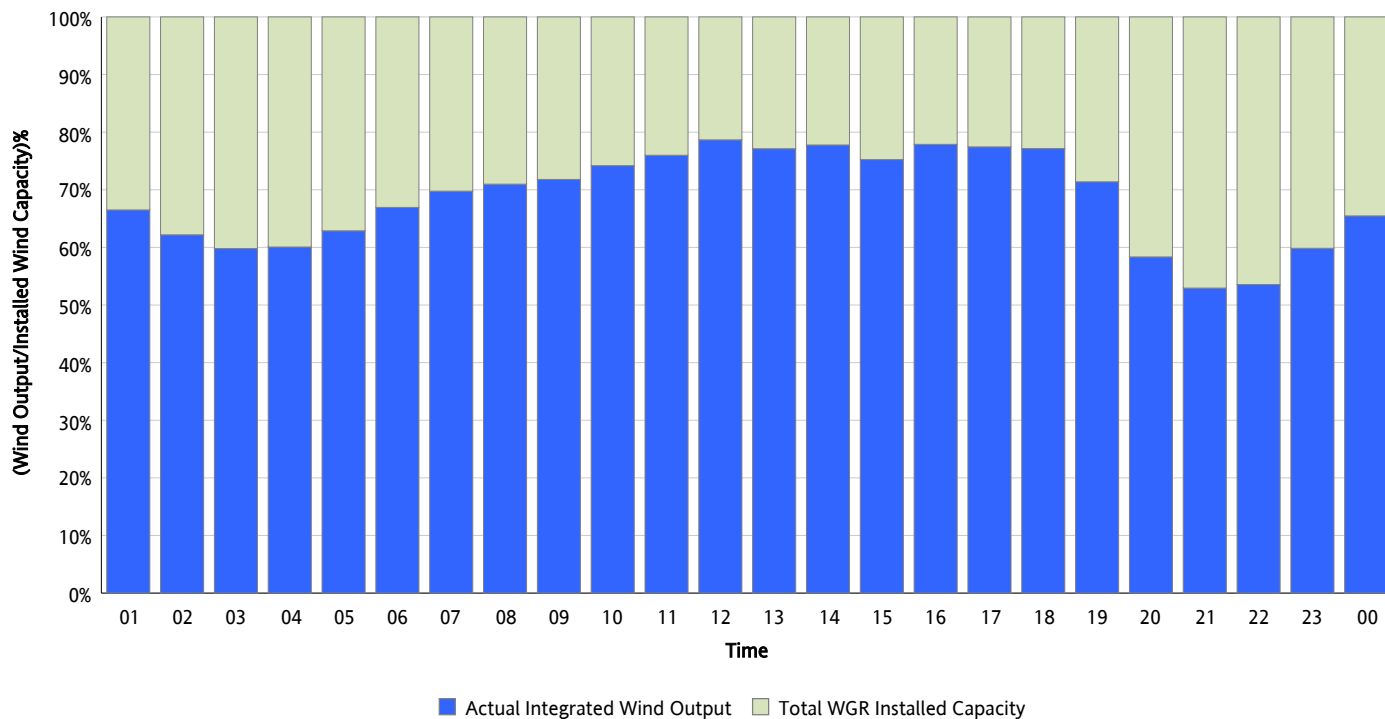
Hourly Average Actual Load vs. Actual Wind Output
12/14/2012



** Wind Record and Wind Max represent instantaneous values and the rest of the values are integrated over the hour*

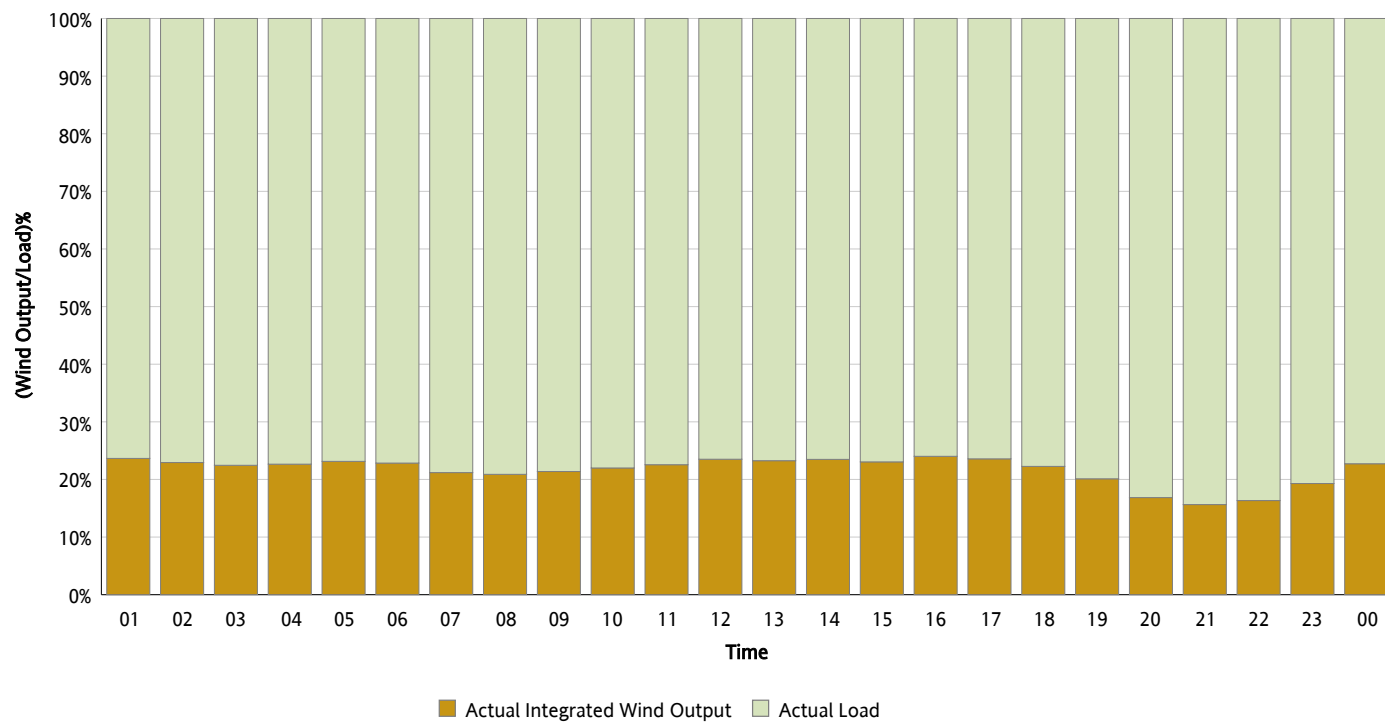
Actual Wind Output as a Percentage of the Total Installed Wind Capacity

12/14/2012



Actual Wind Output as a Percentage of the ERCOT Load

12/14/2012



ERCOT Load vs. Actual Wind Output

12/07/2012 - 12/14/2012

